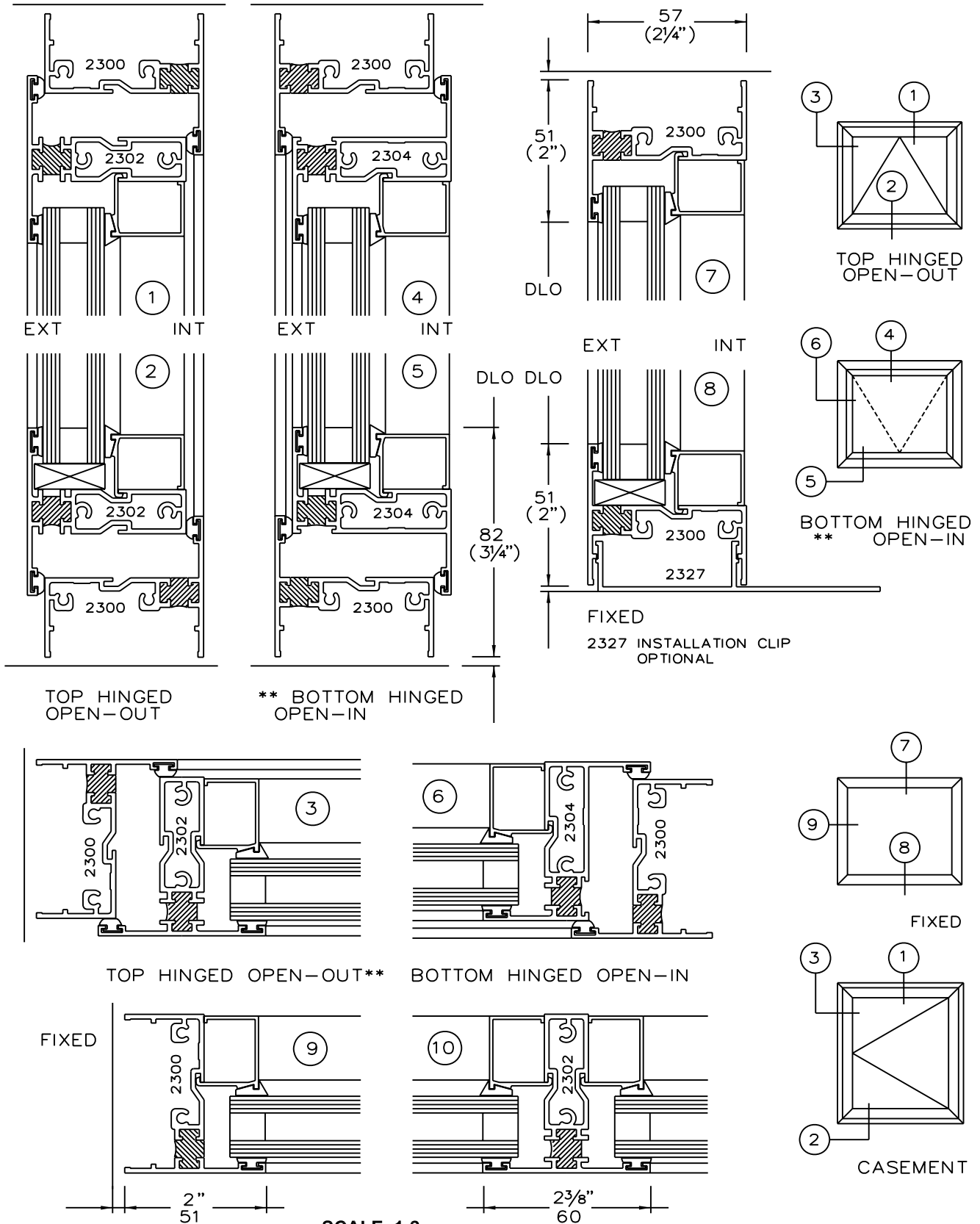


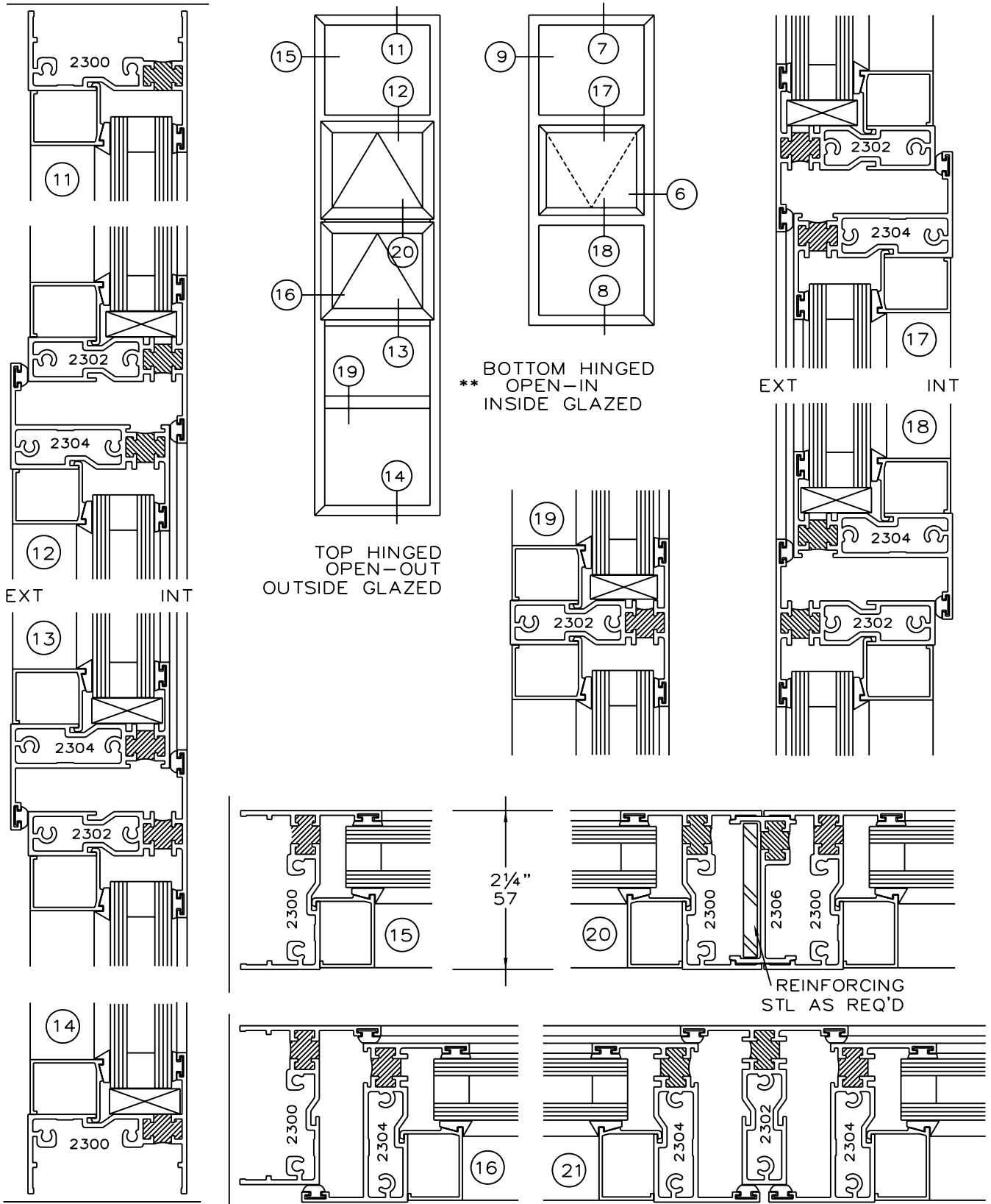
SCALE 1:2



SCALE 1:2

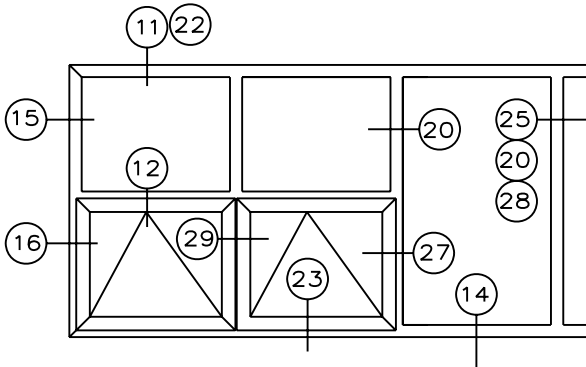
** Open-In Not Recommended unless adequate coverage over head from elements

The Pursuit of Excellence

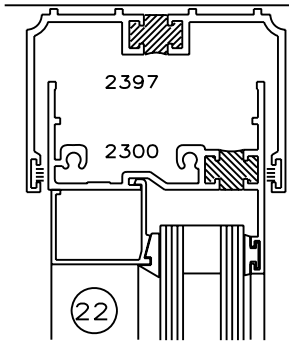
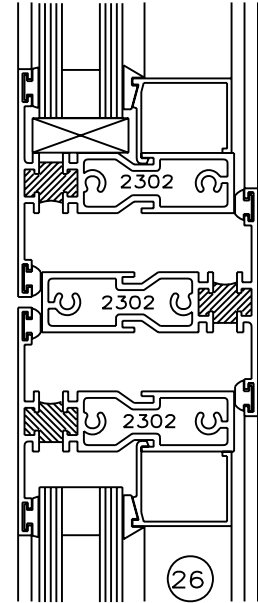


SCALE 1:2

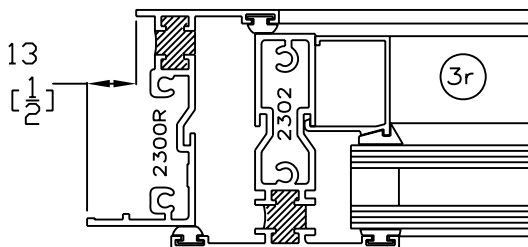
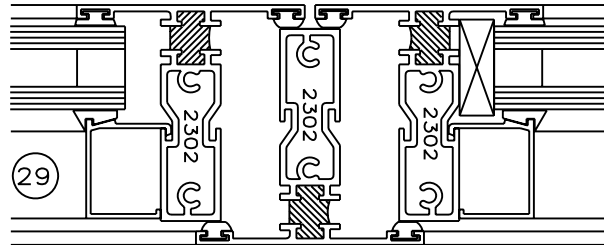
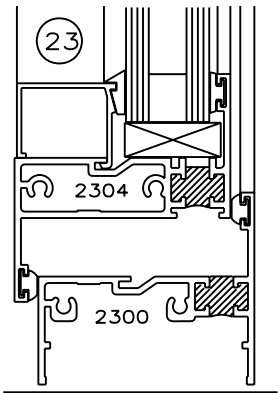
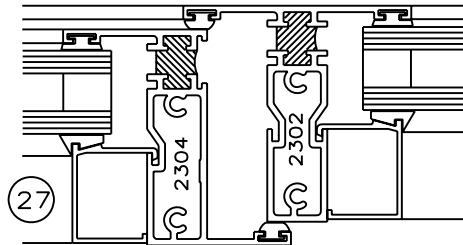
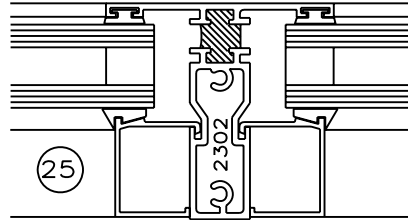
** Open-In Not Recommended unless adequate coverage over head from elements



TOP HINGED
OPEN-OUT
OUTSIDE GLAZED



EXT INT



SCALE 1:2

A.T.MARCK & ASSOCIATES
BUILDING SYSTEMS ENGINEERING LTD.
TEL/FAX (604) 469-6566

PROFILE 2302		AA 6063 T5 STL 250 W				
A= 400 mm ²		I= 161030 mm ⁴			S= 4760 mm ³	
MAX. ALLOWABLE LENGTH (m / ft) FOR SPECIFIED WIND LOAD						
SPACING	0.72 kPa	0.96 kPa	1.20 kPa	1.44 kPa	1.68 kPa	1.91 kPa
	15 PSF	20 PSF	25 PSF	30 PSF	35 PSF	40 PSF
.30 m	2.84	2.58	2.40	2.26	2.14	2.05
1.0'	9.32	8.46	7.87	7.41	7.02	6.73
.45 m	2.48	2.26	2.09	1.97	1.82	1.71
1.5'	8.14	7.41	6.86	6.46	5.97	5.61
.60 m	2.26	2.05	1.87	1.71	1.58	1.48
2.0'	7.41	6.73	6.14	5.61	5.18	4.86
.75 m	2.09	1.87	1.67	1.53	1.41	1.32
2.5'	6.86	6.14	5.48	5.02	4.63	4.33
.90 m	1.97	1.71	1.53	1.39	1.29	1.21
3.0'	6.46	5.61	5.02	4.56	4.23	3.97
1.05 m	1.82	1.58	1.41	1.30	1.19	1.12
3.5'	5.97	5.18	4.63	4.27	3.90	3.67
1.20 m	1.71	1.48	1.32	1.21	1.12	1.05
4.0'	5.61	4.86	4.33	3.97	3.67	3.44
1.35 m	1.61	1.39	1.25	1.14	1.05	0.99
4.5'	5.28	4.56	4.10	3.74	3.44	3.25
1.50 m	1.53	1.32	1.18	1.08	1.00	0.94
5.0'	5.02	4.33	3.87	3.54	3.28	3.08
1.65 m	1.45	1.26	1.13	1.03	0.95	0.89
5.5'	4.76	4.13	3.71	3.38	3.12	2.92
1.80 m	1.39	1.21	1.08	0.98	0.91	0.85
6.0'	4.56	3.97	3.54	3.22	2.99	2.79
1.95 m	1.34	1.16	1.04	0.95	0.88	0.82
6.5'	4.40	3.81	3.41	3.12	2.89	2.69
2.10 m	1.29	1.12	1.00	0.91	0.84	0.79
7.0'	4.23	3.67	3.28	2.99	2.76	2.59
2.25 m	1.25	1.05	0.96	0.88	0.82	0.76
7.5'	4.10	3.44	3.15	2.89	2.69	2.49
2.40 m	1.21	1.04	0.93	0.85	0.79	0.74
8.0'	3.97	3.41	3.05	2.79	2.59	2.43

m
ft

DEAD LOAD CAPACITY FOR 25mm (1") UNITS WITH TWO 6mm (1/4") GLASS PANES MAXIMUM DEFLECTION 3.2mm (1/8")									
HORIZONTAL MULLION PROFILE: 2302		I= 53339 mm ⁴ (0.128 in ⁴)			S= 3221 mm ³ (0.197 in ³)				
VERTICAL MULLION SPACING		0.75m	0.90m	1.05m	1.20m	1.35m	1.50m	1.65m	1.80m
		2.5'	3.0'	3.5'	4.0'	4.5'	5.0'	5.5'	6.0'
1	GLASS HEIGHT	3.65	1.89	1.02	0.60	0.37	0.24		
	SUPPORT ⌀ 1/4	12.00	6.20	3.35	1.96	1.23	0.80		
2	GLASS HEIGHT	3.65	3.54	1.91	1.12	0.70	0.46	0.31	0.22
	SUPPORT ⌀ 1/8	12.00	11.61	6.27	3.67	2.29	1.50	1.03	0.73

m
ft
m
ft

- 1 SETTING BLOCKS CENTERED AT GLASS WIDTH QUARTER POINTS
- 2 SETTING BLOCKS CENTERED AT GLASS WIDTH ONE-EIGHT POINTS

SETTING BLOCKS ARE EQUIDISTANT FROM THE GLASS CENTER LINE

A.T.MARCK & ASSOCIATES
BUILDING SYSTEMS ENGINEERING LTD.
TEL/FAX (604) 469-6566

PROFILE 2300/2306/2300		AA 6063 T5 STL 250 W				
I = 391191 mm ⁴		S = 15315 mm ³				
MAX. ALLOWABLE LENGTH (m / ft) FOR SPECIFIED WIND LOAD						
SPACING	0.72 kPa	0.96 kPa	1.20 kPa	1.44 kPa	1.68 kPa	1.91 kPa
	15 PSF	20 PSF	25 PSF	30 PSF	35 PSF	40 PSF
.30 m	3.82	3.47	3.22	3.03	2.88	2.76
1.0'	12.50	11.35	10.55	9.90	9.40	9.05
.45 m	3.34	3.03	2.81	2.65	2.52	2.41
1.5'	10.95	9.90	9.20	8.65	8.25	7.90
.60 m	3.03	2.75	2.56	2.41	2.29	2.19
2.0'	9.90	9.00	8.35	7.90	7.50	7.15
.75 m	2.81	2.56	2.37	2.23	2.12	2.03
2.5'	9.20	8.35	7.75	7.31	6.95	6.65
.90 m	2.65	2.41	2.23	2.10	2.00	1.91
3.0'	8.65	7.90	7.30	6.85	6.55	6.25
1.05 m	2.52	2.29	2.12	2.00	1.90	1.82
3.5'	8.25	7.50	6.95	6.55	6.20	5.95
1.20 m	2.41	2.19	2.03	1.91	1.81	1.74
4.0'	7.90	7.15	6.65	6.25	5.90	5.70
1.35 m	2.31	2.10	1.95	1.84	1.74	1.67
4.5'	7.55	6.85	6.35	6.00	5.70	5.45
1.50 m	2.23	2.03	1.88	1.77	1.68	1.61
5.0'	7.30	6.65	6.15	5.80	5.50	5.25
1.65 m	2.16	1.97	1.83	1.72	1.63	1.56
5.5'	7.05	6.45	6.00	5.60	5.30	5.10
1.80 m	2.10	1.91	1.77	1.67	1.58	1.52
6.0'	6.85	6.25	5.80	5.45	5.15	4.95
1.95 m	2.05	1.86	1.73	1.62	1.54	1.47
6.5'	6.70	6.10	5.65	5.30	5.05	4.80
2.10 m	2.00	1.81	1.68	1.58	1.51	1.42
7.0'	6.55	5.90	5.50	5.15	4.95	4.65
2.25 m	1.95	1.77	1.65	1.55	1.47	1.41
7.5'	6.35	5.80	5.40	5.05	4.80	4.60
2.40 m	1.91	1.74	1.61	1.52	1.42	1.33
8.0'	6.25	5.70	5.25	4.95	4.65	4.35

PROFILE 2300/2306/2300 AND 0.25" X 1.75" STL BAR		AA 6063 T5 STL 250 W				
I = 391191 mm ⁴		S = 15315 mm ³				
MAX. ALLOWABLE LENGTH (m / ft) FOR SPECIFIED WIND LOAD						
SPACING	0.72 kPa	0.96 kPa	1.20 kPa	1.44 kPa	1.68 kPa	1.91 kPa
	15 PSF	20 PSF	25 PSF	30 PSF	35 PSF	40 PSF
.30 m	4.21	3.83	3.55	3.34	3.17	3.04
1.0'	13.80	12.55	11.60	10.95	10.40	9.95
.45 m	3.68	3.34	3.10	2.92	2.77	2.66
1.5'	12.05	10.95	10.15	9.55	9.05	8.70
.60 m	3.34	3.04	2.82	2.65	2.52	2.41
2.0'	10.95	9.95	9.25	8.65	8.25	7.90
.75 m	3.10	2.82	2.62	2.46	2.34	2.24
2.5'	10.15	9.25	8.55	8.05	7.65	7.30
.90 m	2.92	2.65	2.46	2.32	2.20	2.11
3.0'	9.55	8.65	8.05	7.60	7.20	6.90
1.05 m	2.77	2.52	2.34	2.20	2.09	2.00
3.5'	9.05	8.25	7.65	7.20	6.85	6.55
1.20 m	2.65	2.41	2.24	2.11	2.00	1.92
4.0'	8.65	7.90	7.30	6.90	6.55	6.25
1.35 m	2.55	2.32	2.15	2.02	1.92	1.84
4.5'	8.35	7.60	7.05	6.60	6.25	6.00
1.50 m	2.46	2.24	2.08	1.95	1.86	1.78
5.0'	8.05	7.30	6.80	6.35	6.10	5.80
1.65 m	2.39	2.17	2.01	1.89	1.80	1.72
5.5'	7.80	7.10	6.55	6.20	5.90	5.60
1.80 m	2.32	2.11	1.95	1.84	1.75	1.67
6.0'	7.60	6.90	6.35	6.00	5.70	5.45
1.95 m	2.26	2.05	1.90	1.79	1.70	1.63
6.5'	7.40	6.70	6.20	5.85	5.55	5.30
2.10 m	2.20	2.00	1.86	1.75	1.66	1.59
7.0'	7.20	6.55	6.10	5.70	5.40	5.20
2.25 m	2.15	1.95	1.81	1.71	1.62	1.55
7.5'	7.05	6.35	5.90	5.60	5.30	5.05
2.40 m	2.11	1.91	1.78	1.67	1.59	1.52
8.0'	6.90	6.25	5.80	5.45	5.20	4.95