

I. GENERAL**Scope**

Related specifications and detail drawings are based upon **SD-200 Series** Sliding doors, as manufactured by **Aluminex**.

Furnish materials, labour, plant, equipment, related items and services necessary for fabrication, supply and installation of Aluminum Sliding Doors as shown on the drawings, listed in the door schedule, and required by job conditions and specified herein.

Work Not Included

Structural support for the door tracks, wood-liners, interior or exterior J-mouldings, closures, trim and caulking unless specifically detailed and called out as such.

(Specifier List of Other Exclusions).

Related Work Specified Elsewhere (Specifier List)**Submittals - Shop Drawings**

Prior to fabrication submit shop drawings showing sliding door elevations, all required details, dimensions, caulking joints with their sizes, and specifications for the system, materials, and hardware, as well as necessary installation's requirements.

Submittals - Samples

Before any work is fabricated, all requested representative and properly labeled samples, including specified products with their finishes, shall be submitted to the Architect for his approval.

II. PRODUCTS**Door System**

- ° Door System shall be **SD-200 Series**, for single glass (sealed insulating glass units - Specifier selection) as manufactured by **Aluminex**
- ° The door aluminum profiles nominal dimensions shall be as follows:
 - frame metal thickness 3mm / 0.12" minimum,
 - glazing stop metal thickness 1.3 mm / 0.05" minimum,
 - depth of the frame 45 mm / 1.75",
 - face width of stiles 51mm / 2"
 - face width of rails 76 mm / 3", optional: 152mm/ 6" for the bottom rail).
- ° Glass retention, as for dry glazing method, shall be achieved by extruded aluminum glazing stop profiles.
- ° Whenever substitute systems and/or products are considered, supporting data must be submitted ten (10) days prior to bid date to allow for valid comparison.

Materials

- ° Extruded aluminum shall be AA 6063 T5, Fy = 110 MPa / 16 KSI, alloy and temper.
- ° Any defects impairing strength, durability or appearance are not acceptable.
- ° Sufficient strength and size fasteners shall be made of corrosion-resistant and compatible material such as cadmium or zinc plated carbon steel, stainless steel or aluminum, to prevent any galvanic action (electrolytic corrosion).
- ° The minimum standard weathering shall be (pile cloth with a vinyl fin - the minimum for Specifier selection) or an extruded thermoplastic elastomer tubular profile with a semi-rigid polymeric backing key.
- ° **Optional** weathering at the bottom rail shall be a sweep blade type strip secured with concealed fasteners.
- ° Glazing shall utilize extruded dense Neoprene, EPDM, or other equal material, wedge or spline gaskets. Gasket profiles shall be designed and sized to work with the system and properly serve glazing rabbet assembly.
- ° Setting of glass must be properly designed, sized, placed, and compatible with the insulating glass sealant.

Finish

All exposed surfaces shall be free from defects, scratches and serious blemishes. Aluminum shall receive one of the following available finishes specified by the Architect:

- i) Standard commercial clear anodic coating integral colour (02),
- ii) Standard commercial bronze hard-colour anodic coating (04),
- iii) Optional anodic coating finishes are light bronze and black,
- iv) Standard baked enamel paint in white and rideau-brown colours,
- v) Other paint qualities and colours in baked enamel are available upon request.

Hardware

The door hardware shall be as supplied and/or installed by **Aluminex** and shall include the following (Specifier selection):

- Floor track (surface or flush mounted - Specifier selection)
- Heavy-duty tandem roller assemblies (2),
- Friction free cast guiding buttons at the top rail (2 + 2)
- Adams Rite M.S. lock with cylinder & thumbturn
- Flushbolt for inactive slider where required (1),
- Exterior & Interior flush-pulls,
- Optional hardware - available upon request.

All applicable hardware and templates shall be furnished by the manufacturer for the door installation.

III. EXECUTION**Construction & Fabrication**

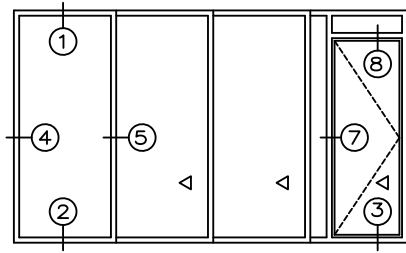
- ° Doors shall be fabricated as shown on approved shop drawings.
- ° The assembly shall provide accurately fit tight hairline joints.
- ° Specified hardware shall be connected accurately to aluminum framing by anti-corrosive fasteners as per manufacturers specifications.

Installation

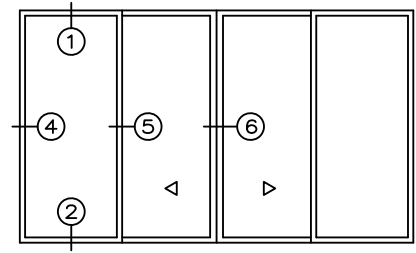
- ° Doors shall be installed by an experienced crew, in correct locations as shown on drawings, in prepared openings, set level, plumb, square and aligned with other work, in accordance with manufacturer's instructions, approved shop drawings and published standards.
- ° All items of the operating hardware, checked and readjusted where required, shall be left in a ready for use condition.

Protection and Cleaning

- ° All work shall be protected against damage during and after installation.
- ° After installation all exposed surfaces shall be cleaned of all contaminants.
- ° The General Contractor is responsible for System protection during construction and final cleaning.



STANDARD SLIDING CONDITION

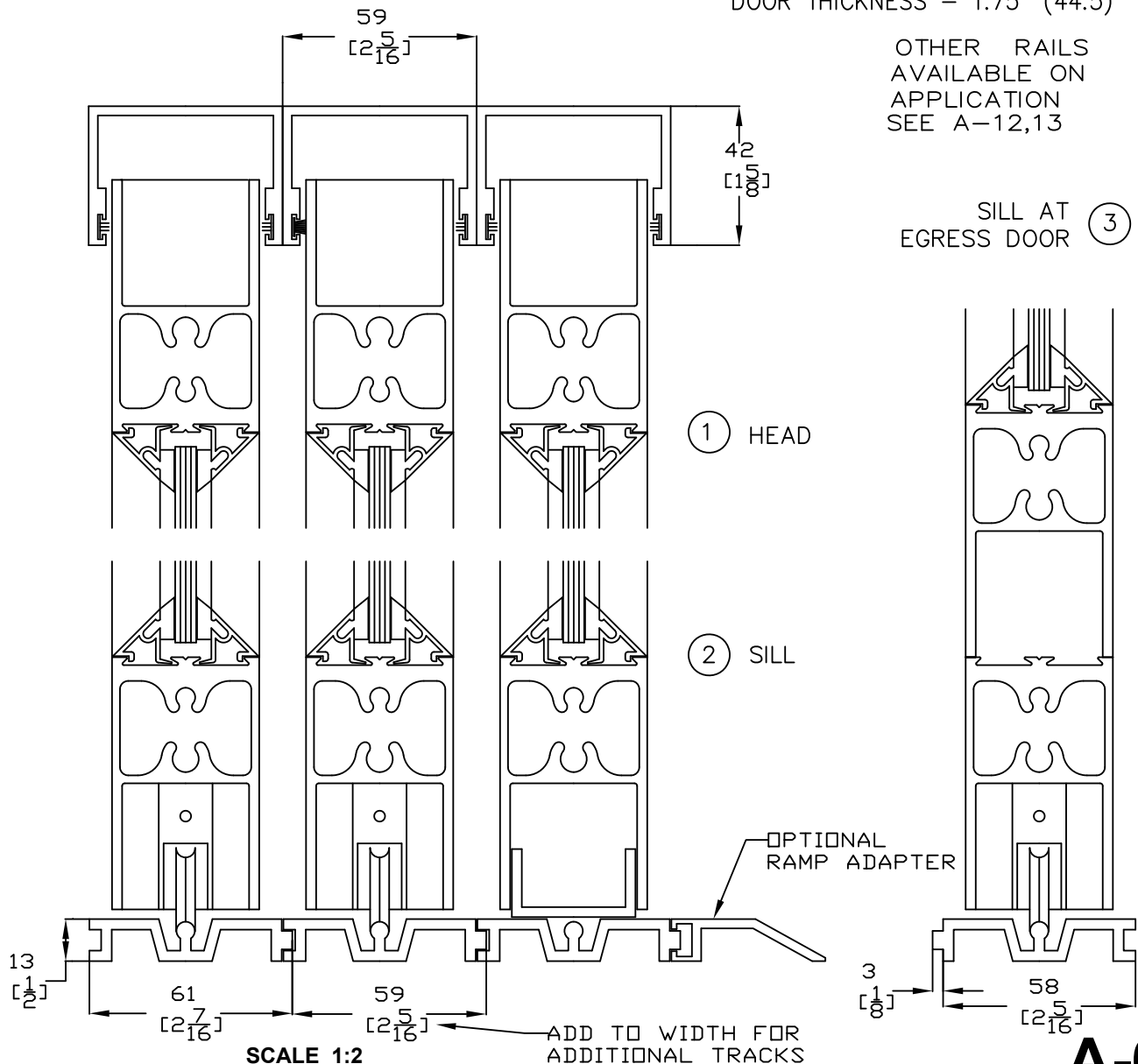


BI-PARTING CONDITION

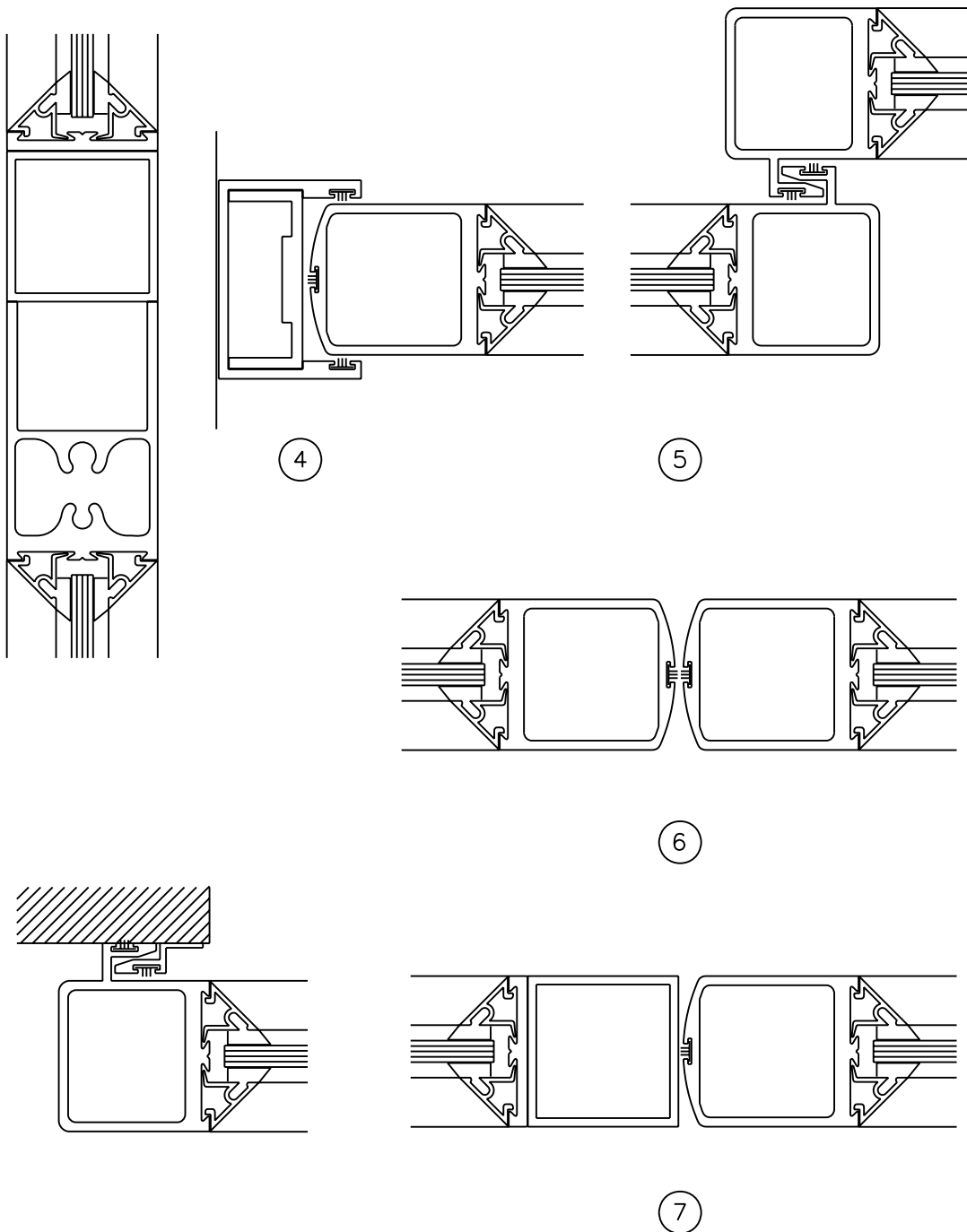
VERTICAL STILE - 2" (50.8)
TOP RAIL - 3" (76.2)
BOTTOM RAIL - 3" (76.2)
DOOR THICKNESS - 1.75" (44.5)

OTHER RAILS
AVAILABLE ON
APPLICATION
SEE A-12,13

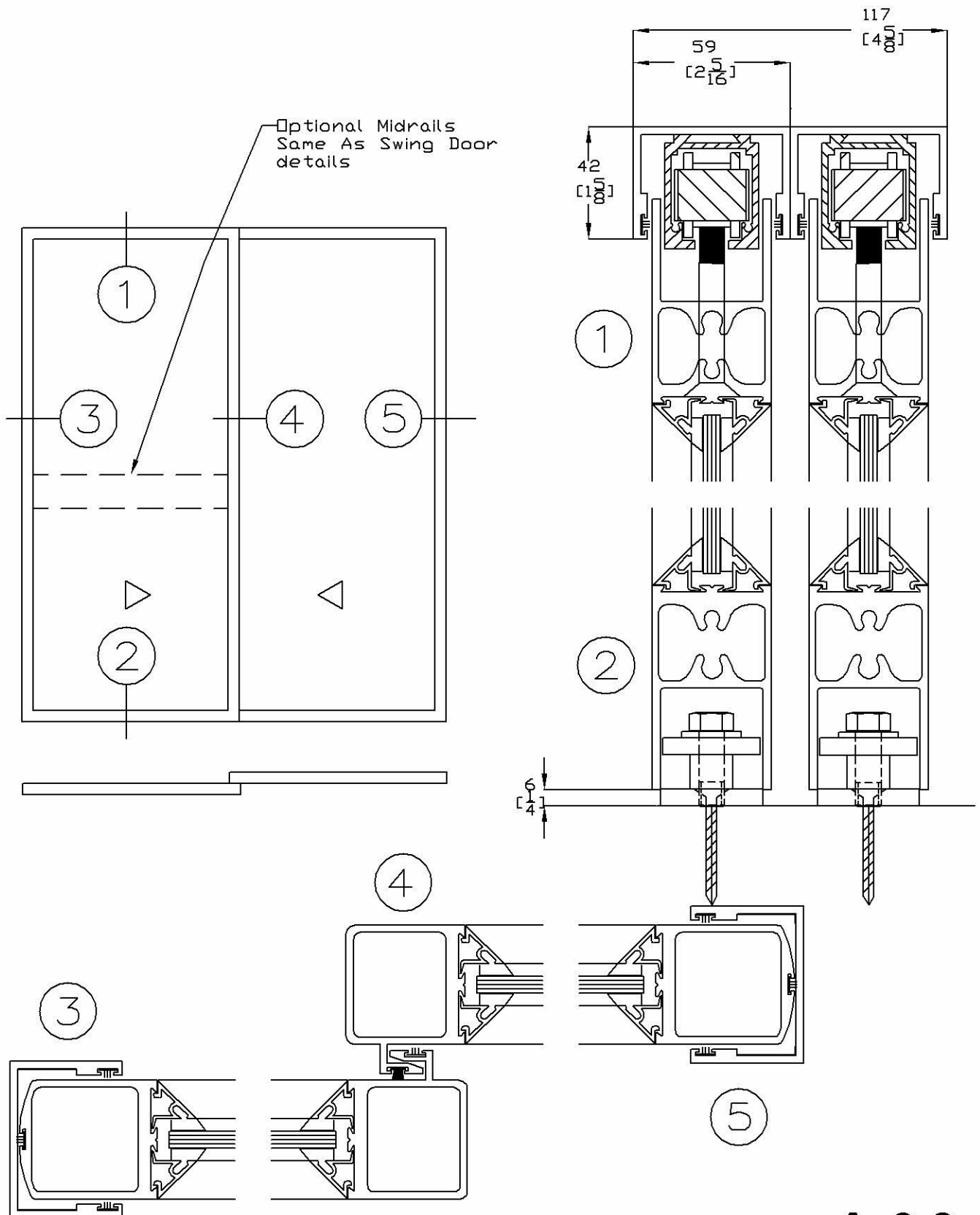
SILL AT
EGRESS DOOR (3)

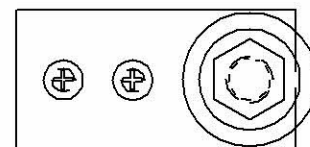
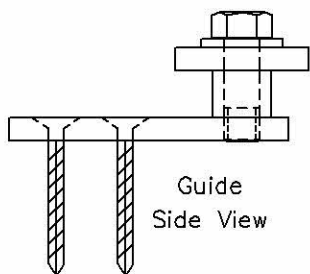
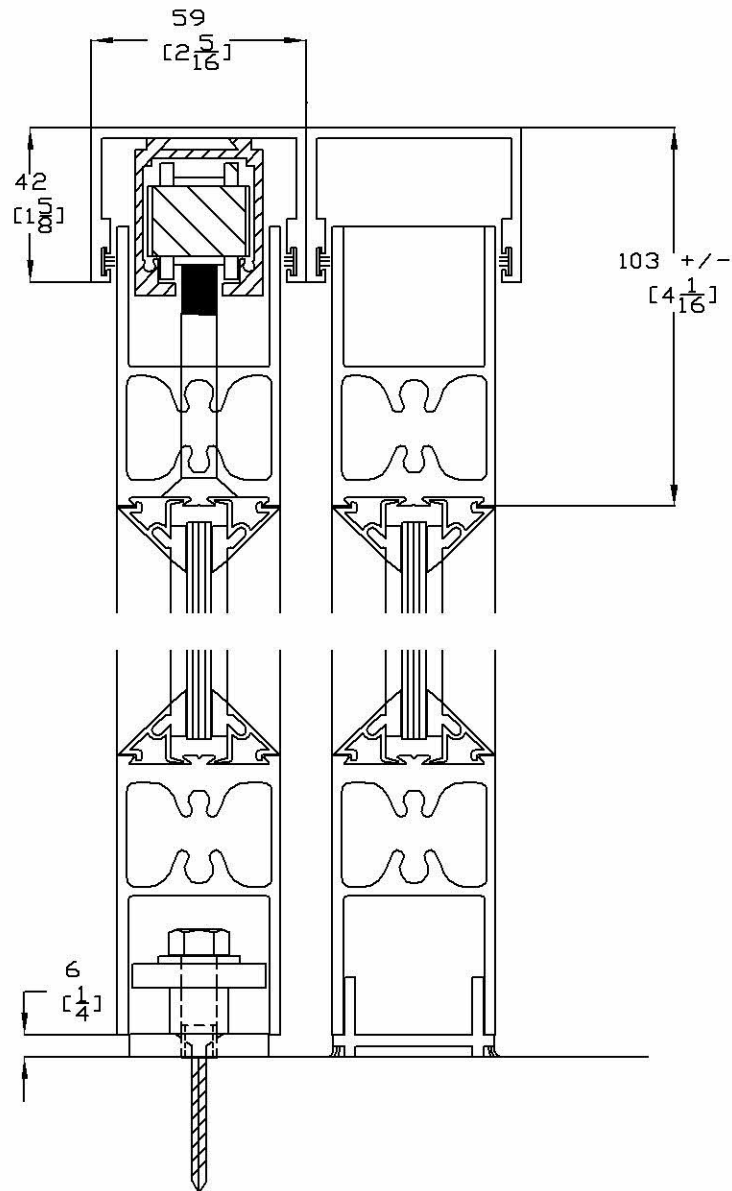


8



SCALE 1:2





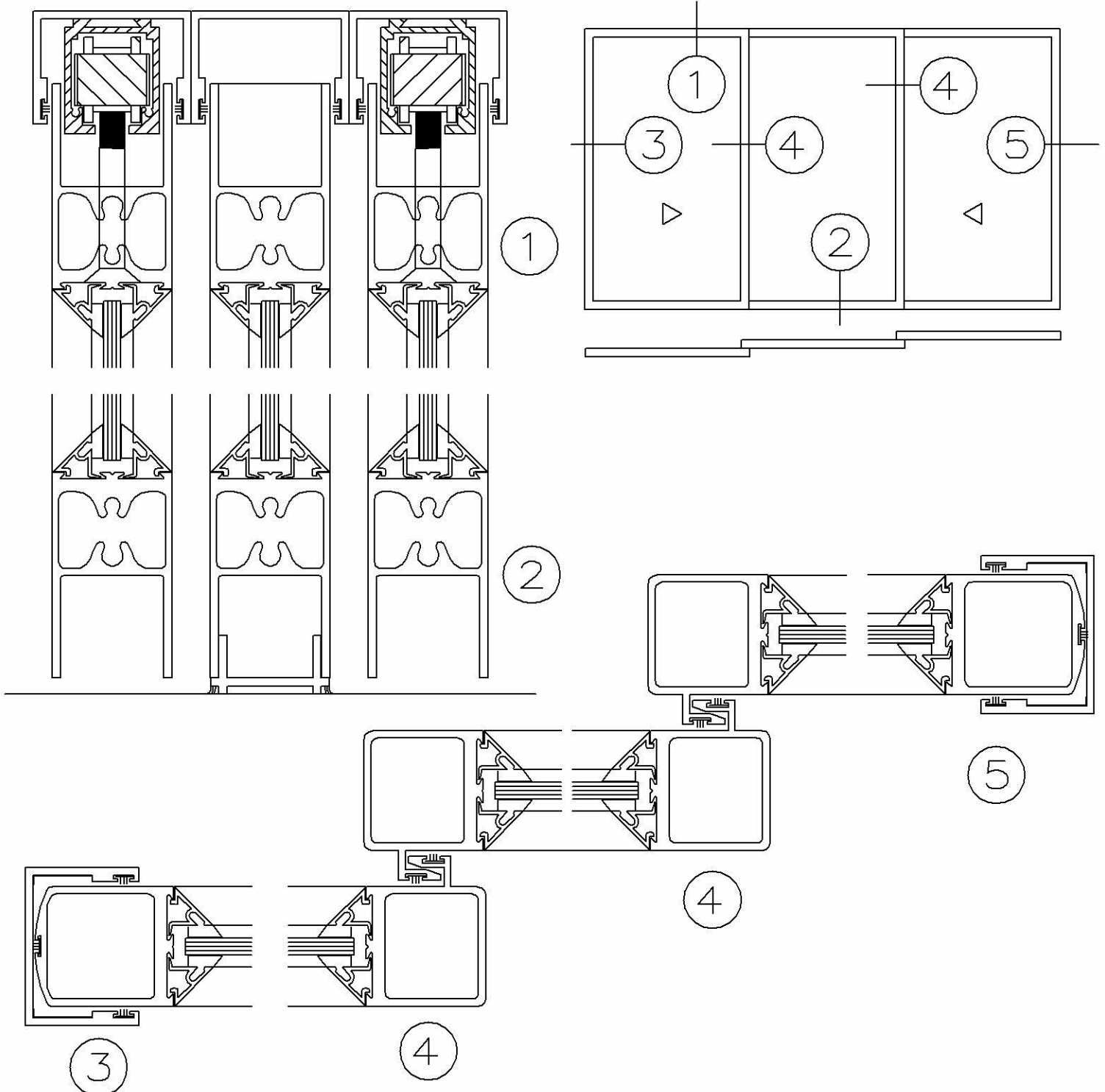
Guide
Top View

SCALE 1:2

THE PURSUIT OF EXCELLENCE

A-6.4

SECTION - PAGE

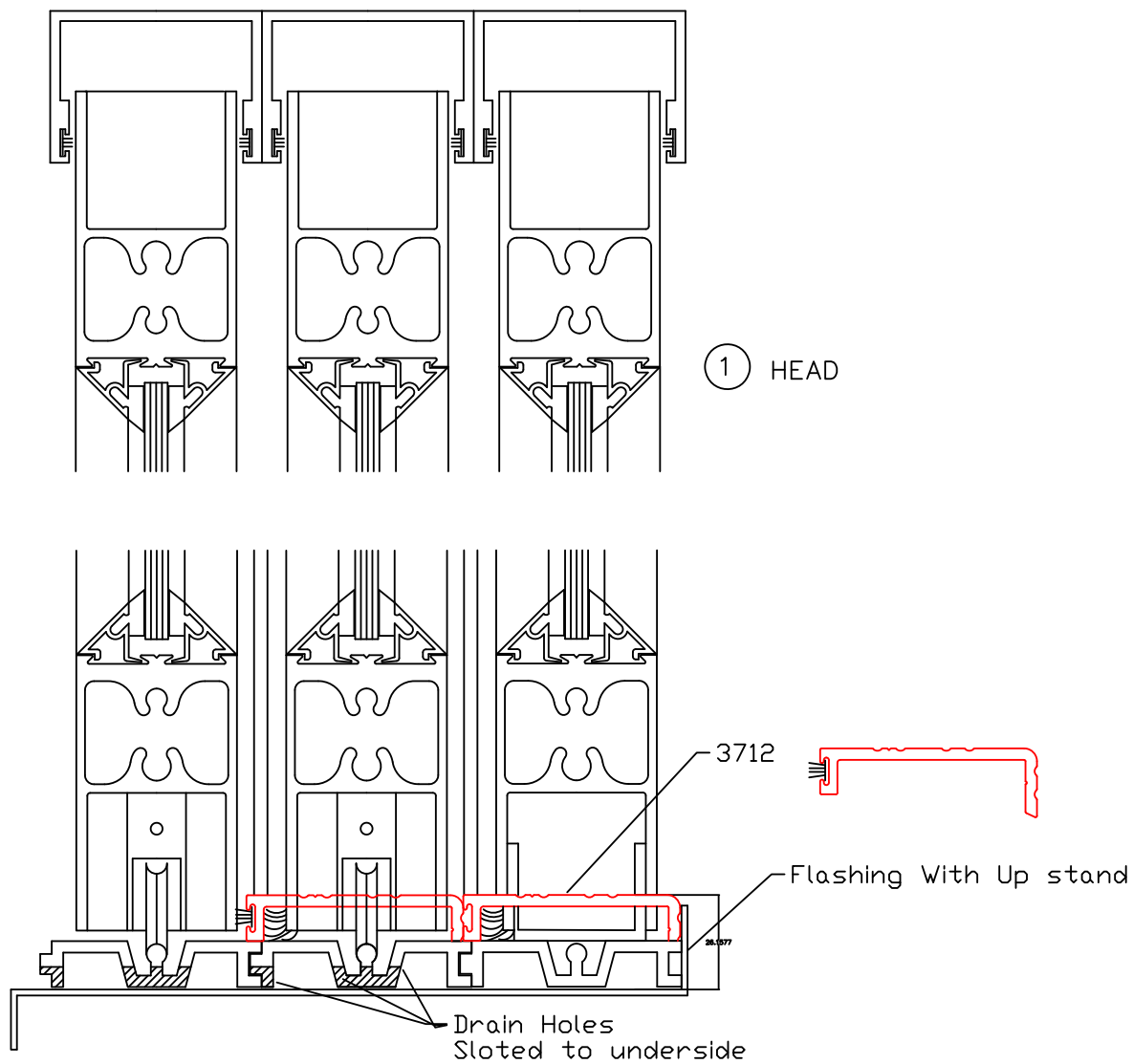


SCALE 1:2

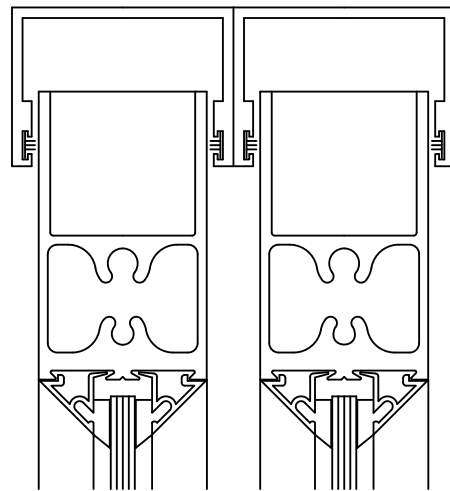
THE PURSUIT OF EXCELLENCE

A-6.5

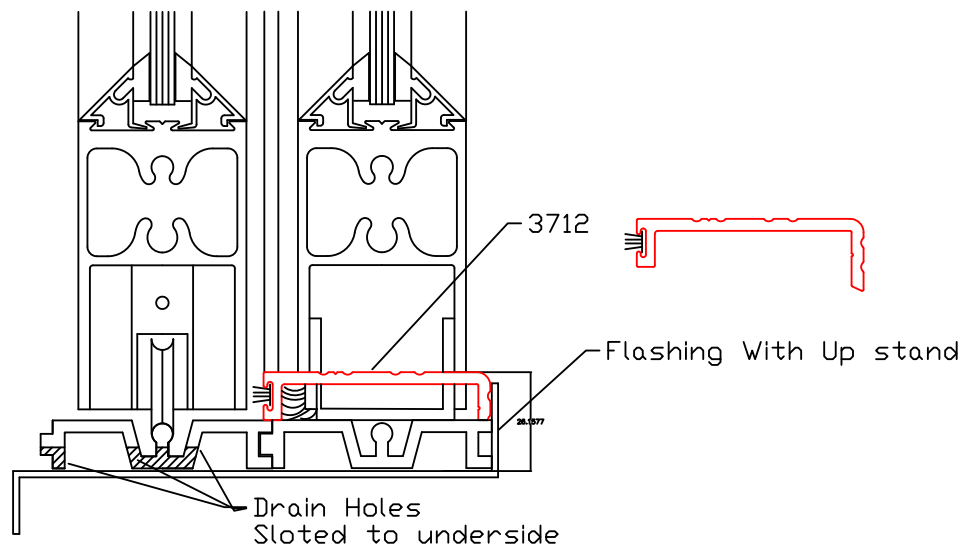
SECTION - PAGE



SCALE 1:2



① HEAD



SCALE 1:2